



# AFINOX AUTOMATRIX

"Precision in Automation, Excellence in Supply"

## Precision in Automation Excellence in Supply

AFINOX AUTOMATRIX PVT LTD CO., a global leader in the supply of industrial spare parts. We specialize in sourcing and delivering high-quality, reliable, and cost-effective solutions for a wide range of industries worldwide. performance and reliability.

### Our Brands



**Address**  
Chennai, Tamilnadu

Get in touch with our team  
to discuss your products  
needs



For More Information  
[www.afnautomatrix.com](http://www.afnautomatrix.com)



# INDUSTRIAL ELECTRICALS PRODUCTS



**E2 Moulded Mining  
Circuit Breaker**



**DM1 Frequency  
Drive**



**EV Traction Inverter**



**Distribution Boards**



**Enclosures**



**DC-Energy-Meter**



**DC1 Frequency  
Drive**



**Contactors**



**DC Conatctors**



**Contactors Power  
Interface**



**Caprilok-Black-  
Conduit**



**Circuit Breaker Load  
Center**



**Cables**



**Busbars**



**Accuprox Inductive  
Proximity Sensors**



**Asset Manager for  
Transformer**

# INDUSTRIAL ELECTRICALS PRODUCTS



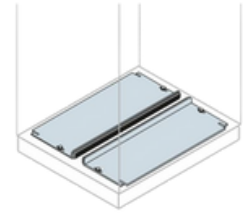
**Motor Starter**



**Mobile-Capacitor-  
Bank**



**Inductive-Proximity-  
Sensors**



**Main Distribution  
Board**



**MCCB**



**Low Voltage  
Frequency Drive**



**LED- Light Fixtures**



**Lamp Circuit Breaker**



**IHB- Light Fixtures**



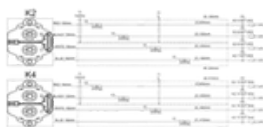
**Hot Swap  
Connectors**



**Internally Fused  
Capacitors**



**Harsh Duty Sensors**



**G2 Conactors**



**Fuses**



**Fuses for Battery**



**Explosion Proof Motors**



# INDUSTRIAL ELECTRICALS PRODUCTS



**Pool Insulator**



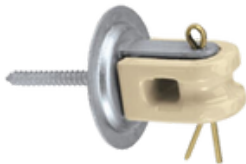
**Split Core Current Transformer**



**Shore Power Connectors**



**Service Entrance Surge Protectors**



**Fuses**



**Transformers**



**Screw Type Insulator**



**Relays-SWG-CB**



**Relays**



**Power Supplies**



**Redundancy Unit for Power Supply**



**Photo Electric Sensors**



**Post Insulator**



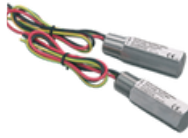
**PFC Capacitor**



**Mtrix Invertors**



# INDUSTRIAL ELECTRICALS PRODUCTS



**Wires**



**Voltage Tranformers**



**voltage Test Station**



**USB- Hotswap connectors**



**Unfused-Capacitors**



**Transformers**



**Transformer Condition  
Monitoring**



**Timer Module**



**Terminal Blocks**



**Telecom-Inverter**



**Switchgear**



**Switchgear Cabinet**



**Switch**



**Surge Protector for Data  
& Signal Applications**



**Surge Protector**



**Starter**

# INDUSTRIAL ELECTRICALS PRODUCTS



**A1 Motor Unit**



**ACB Switch**



**Accessory for  
Variable Frequency  
Drives**



**AC Contactor  
Separator**



**Connectors**



**Transformers**



**Conduit Sealing  
Device**



**Conduit Fittings**

## BRANDS



# ELECTRONICS DEVICES



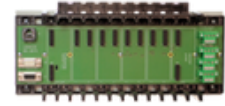
**Advanced Diagnostics**



**5500 Controller  
Temperature  
Controller**



**Distance Sensors**



**Backplane LB9023**



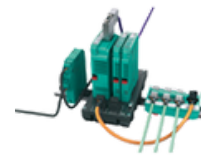
**Accessories**



**Absolute Rotary  
Encoders**



**Basic Power Supplies**



**Commissioning Tool**



**Communication  
Module**



**Continuous  
Measurement**



**Control Module**



**Control Units EX E**



**Displays & Signal  
Processing**



**Engineered HMI**



**Ethernet Switches**



**Explosion Protection  
Enclosures**



# ELECTRONIC DEVICES



**Float switch**



**Functional Safety  
Process Automation  
Application**



**GXP HMI**



**High Temperature  
Identification  
System**



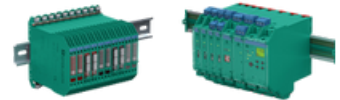
**Industrial  
Communication**



**Interface Module**



**Load cells**



**Intrinsically Safe  
Barriers Module**



**Magnetic Immersion  
Probe**



**Magnetic Encoder**



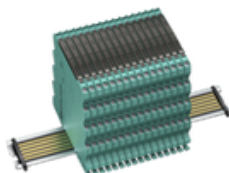
**Measurement  
Product**



**Modular HMI**



**Module**



**Modules**



**Multiple Beam Light  
Barriers**



**Object presence  
Detection**

# ELECTRONIC DEVICES



**PCI Card PLC**



**Photoelectric Sensor**



**Power Extenders &  
Repeater Power**



**Power Supplies**



**Power Supply**



**Power Supplies**



**Problem Solver ML  
100 Series Sensor**



**Process Displays**



**Profinet Gateway  
with PLC**



**PS PowerSupplies**



**Radar Sensors with  
CAN interface**



**Relay Module**



**Relay Output  
Module**



**Rotary Encoders**



**Safety Beauty Shot  
Computer  
Automation**



**Safety Relais  
Controller**

# ELECTRONIC DEVICES



**Safety Switches  
& Enabling  
switches**



**Signal Converters**



**Smart Runner 3D  
sensor**



**Switch Amplifiers**



**Switch  
Disconnectors**



**Switches**



**Trip Amplifiers**



**Ultrasonic Sensor**



**Universal Input  
Output**



**Vibration Limit  
Switch**

## BRANDS





# MECHANICAL SPARE PARTS



**Axial Clamp Seal**



**Bearing 2**



**Bearing**



**Bearing 3**



**Belt Pulley**



**Belt Sleeve**



**Bolt and Nut**



**Bolt and Nut**



**Cam Rollers**



**Cam Roller**



**Sasatte Seals**



**Chain 2**



**Chain Lubrication**



**Chain**



**Classical Timing Belt**



**clutch release bearing seal**

# MECHANICAL SPARE PARTS



**Combi Kits**



**Controller**



**Coupling Horizontal  
Split Cover**



**Switches**



**Crane Rail  
Lubricator**



**Cylindrical Needle  
Roller**



**DDS Differential  
pressure switch**



**EFFP Grease filling  
pump**



**Electrically  
Operated  
Lubrication Pump**



**Electrically  
Operated Pump**



**Gear Coupling Cover**



**Gear Coupling  
Assembly Kit**



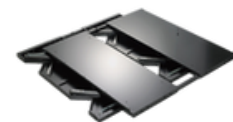
**Hydraulic Pump**



**Hydraulic Rings &  
Propellernuts**



**Idler Sprocket**



**Isolation Table**

# MECHANICAL SPARE PARTS



**Keyless Bushing**



**Keyway**



**Lubrication Pump  
p205**



**Lubrication Pump  
P212**



**Magnetic Encoders**



**Metal Face Seal**



**Non Split Housing**



**Non Split Housings**



**Pressure Switch DSB**



**PTFE Seals**



**Pulleys**



**Vings with Flanges**



**Rings with Roller**



**SH Bushing**



**Shaft Alingment Tool**



**Shafts**



# MECHANICAL SPARE PARTS



**Speedi Sleeve**



**Support Roller**



**Standard Jaw  
Pullers**



**Tapered Coupling  
Grid**



**Tapered Grid  
Coupling Hub**



**Thin Roller Washer**



**Turbain Shaft**



**Valve Stem Seals**



**PC Pump**



**OS Metering Device**

## BRANDS

**ABB**

**Honeywell**

**EATON**

**MITSUBISHI  
ELECTRIC**  
Changes for the Better

**SKF** **rexroth**

# HYDRAULIC EQUIPMENTS



**Anti Reaction Valve**



**Bar Manifolds &  
Motor Pump**



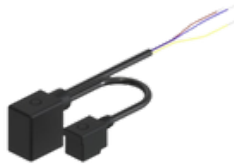
**Braided Fittings**



**Braided Hose**



**Check Valve**



**Cable Power Cable**



**Compensated  
Proportional Valves**



**Climate Solution for  
Cooling**



**Condensing  
Pressure Regulator**



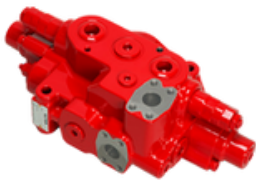
**Configurable  
Solenoid Operated  
Modular Valves**



**Control Shut Off &  
Relief Valves**



**Cylinder Control  
Manifold**



**Cylinders**



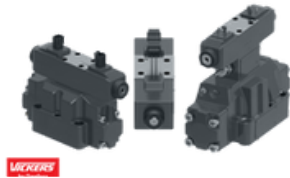
**Diesel Power Pack**



**Differential Pressure  
Controllers & Flow  
Controllers**



**Differential pressure  
controllers flow  
controllers limiters 2**



**Directional Control  
on off Valves**



**Directional Valve  
Group 2**



**Directional Valve  
Group**



**Dynomax Hose**



**Electric Hydraulic  
Worholic Pump**



**Electric Power Pack**



**Electrical Pressure  
Switch, Manifold  
Mount**



**Electrical Pressure  
Switch**



**Electron. Control  
Accessories**



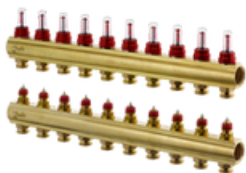
**Energy Meters**



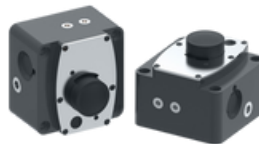
**Face Seal**



**FHF EM Automatic  
Air Vent**



**FHF F10 Group Brass  
Manifold Set**



**Flow Control Valves**



**Gauge Adaptor**



**Gauge Valve**

# HYDRAULIC EQUIPMENTS



**Gear Motors**



**Hexagon Hydraulic Manifold**



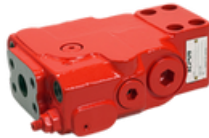
**High Pressure Fitting 2**



**High Pressure Fitting**



**High Voltage Multipurpose Motor**



**Holding Valve**



**Hybrid Coupler**



**Hydraulic Pump**



**Hydraulic Cylinder**



**Hydraulic Force and Pressure Gauges**



**Hydraulic Lift Valve**



**Hydraulic Manifold 4 Outlet**



**Hydraulic Manifold with Gauges and Frame**



**Hydraulic Manifold**



**Hydraulic Pressure Gauge**



**Hydrokraft MFXS Motor**

# HYDRAULIC EQUIPMENTS



**ICS Cartridges  
Group 03  
Directional Control  
Valves**



**Industrial Vane  
Motors**



**Industrial Solenoid  
valves Danfoss**



**Intensifier Face  
Mount Manifold**



**Intensifier, Inline,  
Dump Valve**



**Line Control Shut  
Off and Relief Valves**



**Manifold Set**



**Low Speed High  
Torque Motor Group  
1**



**Mechanical Pressure  
Switch**



**Micron Nominal  
Filtration**



**Motor**



**Mobile Piston  
Motors**



**Mounted Directional  
Control Valve,**



**Pilot Valves for ICS  
Flexline**



**Power Pack Valve**



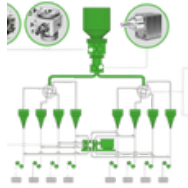
**Power Pack Valves**



# HYDRAULIC EQUIPMENTS



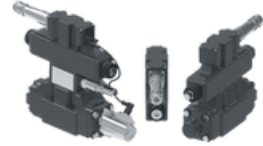
**Pressure Reducing Valve for VP-Series Valves**



**precision Gear Pump**



**Pressure Switch**



**Proportional Directional Valves**



**proportional Relief Valve**



**Proportional Valve Electronics**



**PVG 32 Proportional Valves**



**Quick Disconnect Coupler and Adaptor Kit**



**Quick Disconnect Coupler Female Half**



**Quick Disconnect Coupler**



**Remote Mounted Directional Control Valve**



**Return Line Filter**



**Screw Pump**



**Servo Valves**



**Spiral Hoses**



**Stainer**

# HYDRAULIC EQUIPMENTS



Ultra-High Pressure  
Fitting, Coupling



Ultra-High Pressure  
Fitting, Cross



Ultra-High Pressure  
Fitting



Ultra-High Pressure  
Fitting Elbow



V72 Pilot Operated  
Check Valve



V17 Check Valve



Valve



Valve Vision Seals



Valves



VD1P Inline Check  
Valve



VD2P Dual Pilot  
Operated Check  
Valve



Waltech 3 Fittings



Strainers for District  
Heating and District  
Cooling



Strainers for Heating  
and Cooling

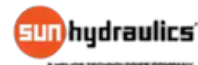


Tank Accumalotor



Thermo-plastic  
Duplex Torque

## BRANDS





**Effector RV 3110**



**Capacitive  
Sensors**



**Pressure meter  
sensors**



**Inductive sensors**



**Temperature  
Sensor**



**Flush Pressure  
Sensor**



**Photoelectric  
Sensor**



**Diffuse Reflection  
Sensor**



**Intelligent Incremental  
Encoders**



**Inductive Ring  
Sensors**

## **BRANDS**

**ABB**

  
Endress+Hauser

**Honeywell**

  
**EMERSON**

**KROHNE**